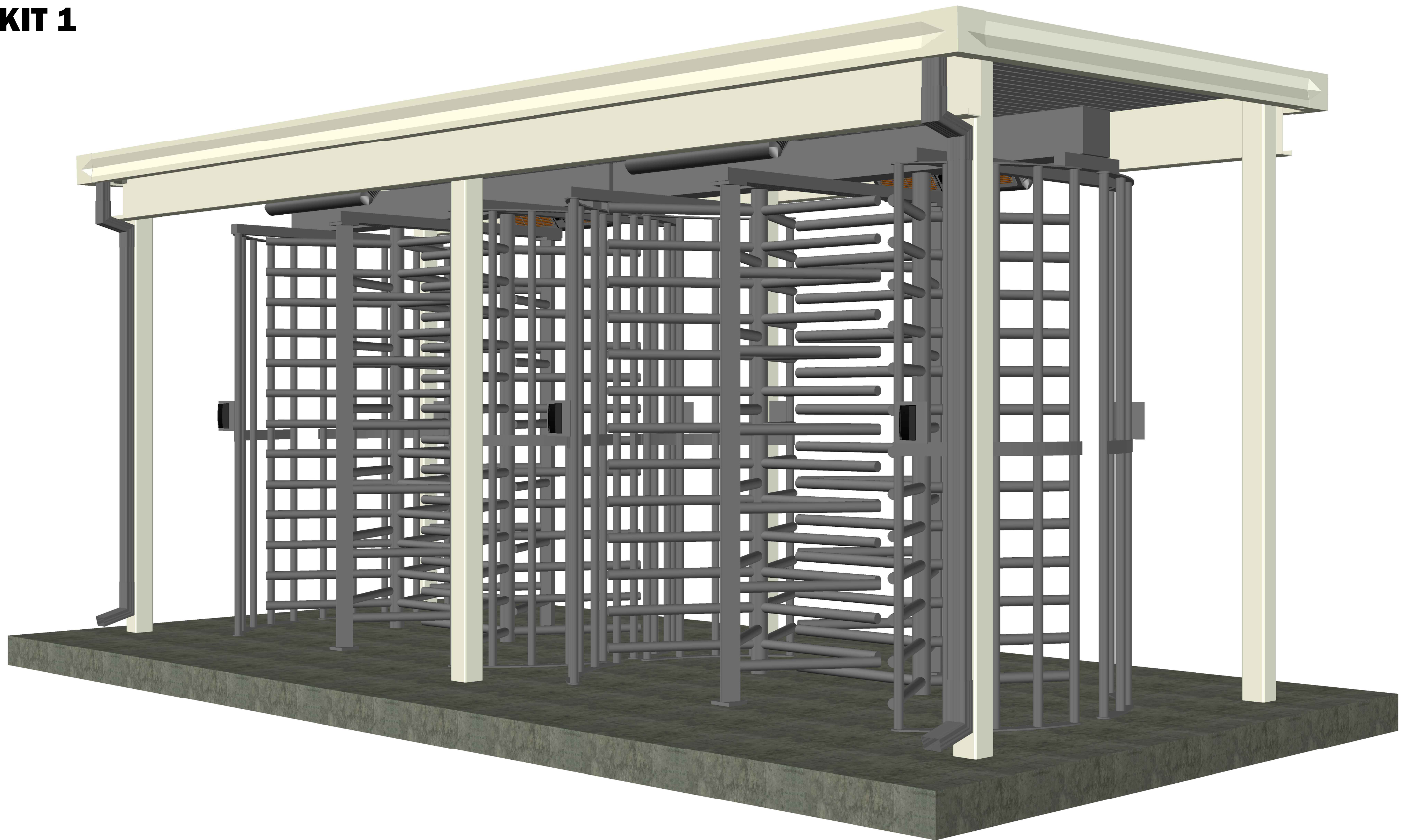


**High Security Tandem Turnstiles + Canopy
w/ EntraPass System
KIT 1**



2 (qty.) HS430-T
TANDEM TURNSTILES
FREESTANDING CANOPY

WWW.TURNSTILES.us

8641 South Warhawk Rd.
Conifer, CO 80433
Patrick McAllister Tel:303-670-1099

TURNSTILE CANOPIES

We offer a complete line of roll-formed and extruded aluminum canopies and walkway covers. From the smallest door canopy to the largest walkway cover, all materials undergo constant inspection and quality control.

Detailed shop drawings bearing the seal of a Registered Professional Engineer are provided when required, and specification, design and installation assistance is never more than a phone call away. Extruded systems are available in both painted and anodized finishes to harmonize with the widest range of architectural designs to include custom colors available. In addition, laminated EPS panels for insulated roof and wall panels are available.

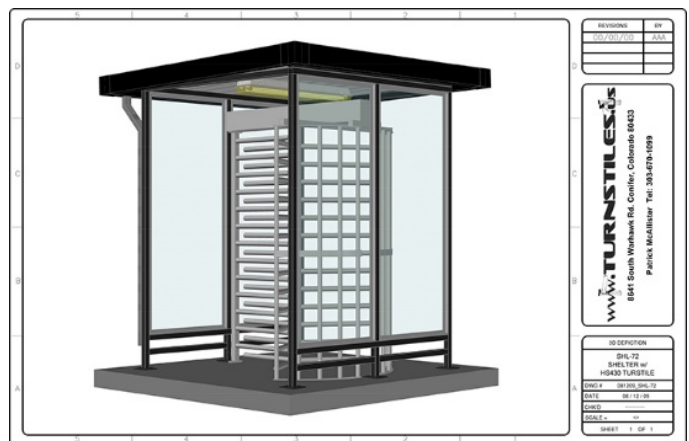


These are perfect for turnstile installations to protect and secure entrances, and are custom designed for any turnstile and gate configuration.

The canopies are also available in steel with tempered glass or Lexan sides for further weather protection.

OPTIONS

- Choice of colors (see next page)
- Overhead and exterior lighting -
- Infrared heaters
- Tempered glass or Lexan sides (steel model only)



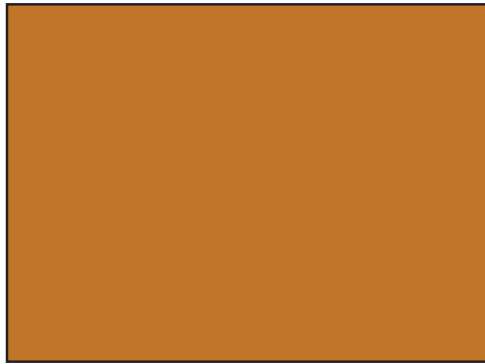
P240 ROLL FORMED FASCIA GUTTER COLOR CHART

PLEASE NOTE: We cannot guarantee an exact color match with the sample chart and actual materials. Some color deviation is normal and expected.

.050 Gauge Aluminum



BROWN



CLAY

Color availability:

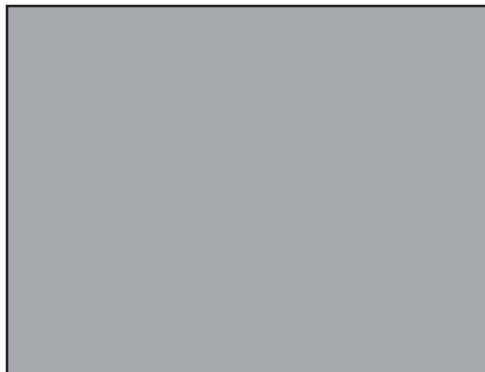
8" Flat Pans: White or Ivory

Perimeter Fascia:
Any color

6.75" Aluminum
C-Beams: White, Dark
Bronze, Ivory



DARK BRONZE



GRAY

3" Square Aluminum
Posts: White, Dark
Bronze, Clay

Downspouts: White,
Dark Bronze, Ivory,
Clay, Brown



IVORY



WHITE

The High-Security Series

Full-Height Turnstile (Tandem) | Interior & Exterior Application

HS427-T | HS430-T

Turnstiles.us sells the most reliable full-height turnstiles available. The High-Security Series units can be engineered to meet all your security and control requirements, and can be created as stand-alone units or as part of an integrated system. Available in stainless steel (304 or 316), carbon steel with powder coating, or hot-dipped galvanized finish. These units can be fitted for any application with leading edge technology and features.



New Installation shown with stainless steel tandem turnstile and HS336 ADA gate.

Controls and Interfaces

- Biometric Integration
- Fail-Open or Fail-Secure Locking
- Card Readers
- Push-Button and Wireless Remotes
- Electronic/LCD Counters
- Manual Key Override – both directions
- Metal Detection
- Indicator Lights

Size Options

(pedestrian clearance):

HS427-T: 27" (686mm)

HS430-T: 30" (782mm)

Also available in stainless steel or powder coated finishes.



Optional black or safety orange end caps available for galvanized units.



We're the #1 Choice of Top Architects, Security Pros and Engineers

For over two decades, www.Turnstiles.us has been the globally trusted name in pedestrian control equipment. Made in Ohio and shipped worldwide, we are the first choice of leading architects, facility managers, security consultants and engineers. Whether your project requires high security full-height turnstiles, waist-high units, or matching ADA accessible gates, www.Turnstiles.us is the secure choice. And, we're experienced in access control systems, from card readers to biometric scanning, to give you the power to control access.

	Depth	Width	Passage Width	Passage Height	Overall Height
	A*	B*	C*	D*	E*
HS427-T	57" 1448mm	94" 2388mm	27" 686mm	84" 2134mm	91" 2311mm
HS430-T	59.1" 1501mm	102" 2591mm	30" 762mm	84" 2134mm	91" 2311mm

* See CAD drawings on reverse side.

The High-Security Series

Full-Height Turnstile (Tandem) | Interior & Exterior Application

HS427-T | HS430-T

Applications:

Ideal for controlling orderly flow of foot traffic in both indoor and outdoor settings

Design & Construction:

- Designed for secure operation with aesthetics in mind
- Featuring fully welded exterior components
- Minimal exposed stainless steel hardware
- Heavy gauge materials meeting ASTM standards

Measures:

HS427-T

Size of opening (pedestrian clearance)

HS427-T 27" (686mm)

Arm and Barrier Tubing Sizes

1 1/2" diameter 14 gauge (38mm) - Standard

1 3/4" diameter 14 gauge (44mm) - Optional

Width	Depth
94" (2388mm)	57" (1448mm)

HS430-T

Size of opening (pedestrian clearance)

HS430-T 30" (762mm)

Arm and Barrier Tubing Sizes

1 1/2" diameter 14 gauge (38mm) - Standard

1 3/4" diameter 14 gauge (44mm) - Optional

Width	Depth
102" (2591mm)	59.1" (1501mm)

All models:

- Overall exterior height 91" (2311mm)
- Pedestrian walk through height 84" (2134mm)

Matching Swing Gate available

(see model HS336 Manual Passage Gate information)



HS336 - Back (stainless steel with optional mesh push bar)

Available Finishes:

- Hot dipped galvanized carbon steel
- Carbon steel with powder coating (standard color is black/other colors available upon request)
- Our signature 304 stainless steel, No. 4 satin finish, or 316 stainless

Operation:

6500 Series Control Head, featuring:

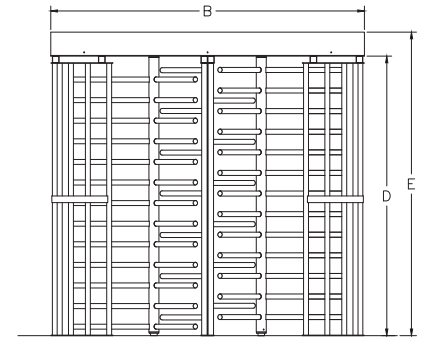
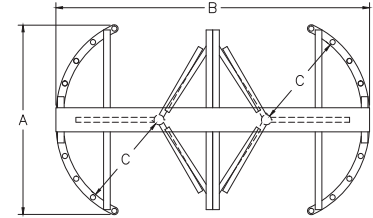
- Auto-indexing (self-centering) with adjustable hydraulic shock suppression
- Hardened tool steel locking bars, cam and roller assemblies
- Permanently lubricated bearings
- Your choice of manual or electronic control on both directions
- Nearly universal integration to any number of access control systems
- Your choice on each electronic direction of locking or unlocking on power failure

Options:

- Card reader mounting plates
- Daylight visible indicator lights
- Bi-directional key overrides
- Lockout bar (padlock not included)
- Decorative arm caps (for galvanized unit)
- Stainless steel overhead full canopy
- Half canopy (covers passageway)
- 8 digit key resettable LCD counter with seven year lithium battery
- Cold weather package, including thermostat controlled heater and insulated mainframe
- Metal detection
- Push button and wireless remotes
- Heel guard arm covers
- Hinged or split covers (for tight clearance installations)
- Additional options available upon request

Warranty:

Units are warranted against defects in materials and workmanship for a period of one year from date of delivery. See warranty information for specific details.



Dimensions are approximate.

Electrical Specifications:

(per rotor)

Input Voltage: 100-240 VAC

Input Current: 1.3 - .55 A

Frequency: 50/60 Hz

Storage Temperature: -4 to 158°F

Operating Temperature: 32 to 122°F (Cold weather package available)

Operating Voltage: 24VDC

Operating Current: 1.2 A (typical)

Standards and Codes:

Austenitic stainless steel:

ASTM A240, A249, A276

Hot rolled steel:

AISI C-1020, AISI C-1018

Hot dipped galvanizing:

ASTM A-143, ASTM A-153-80

Stainless steel fasteners:

ASTM A-320

American Welding Society (AWS)

Standard D 1.1

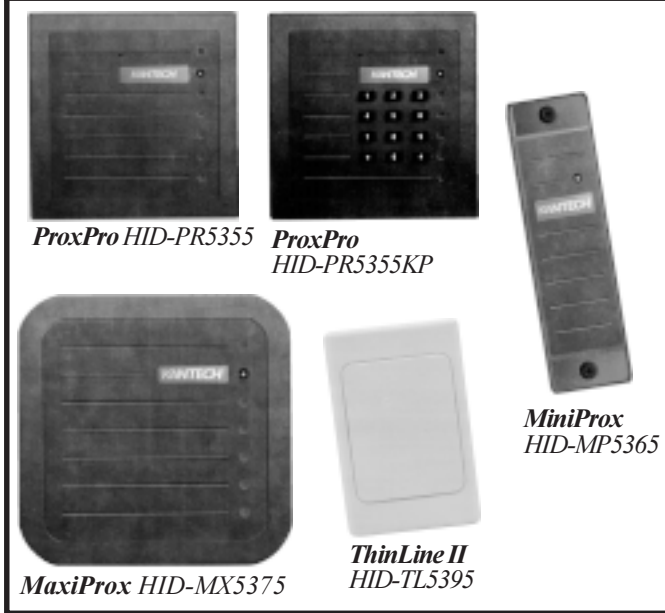


The 6500 series control head is certified to conform to UL Standard 325 & UL Subject 2593



Controlled Access, Inc. is a registered ISO 9001:2008 company

HID Readers



ProxPro HID-PR5355

ProxPro HID-PR5355KP

MiniProx HID-MP5365

MaxiProx HID-MX5375

ThinLine II HID-TL5395

The **MiniProx™** reader boasts a new slim design for a low-profile appearance. The attractive new design allows the Mini-Prox to be mounted indoors and match any decor.

The **ThinLine II™** reader provides the same performance and reliability as the MiniProx but with a low profile appearance. Housed in an industry standard switch plate, the ThinLine is an attractive addition to any installation.

The **ProxPro™** reader combines all of the electronics usually found in two separate packages into a single, architecturally attractive enclosure that mounts to a standard single-gang box. With its inherently weatherproof design, the reader is easily mounted either indoors or outdoor. Integrated keypad option (KP) is available on this reader and is compatible with EntraPass, WinPass and KL-8000 only.

The long read range of the **MaxiProx™** reader provides a significant user advantage by minimizing or eliminating the effort required to present an access control card. This makes the reader ideal for installations incorporating parking control, or where special consideration is needed to facilitate access.

Audiovisual indication

When a proximity card is presented to the reader, the red LED flashes green and the beeper sounds. The multicolor LED and the beeper can also be controlled individually by the host system.

Diagnostics

On reader power-up, an internal self-test routine checks and verifies the setup configuration, and initializes the reader operation.

Security

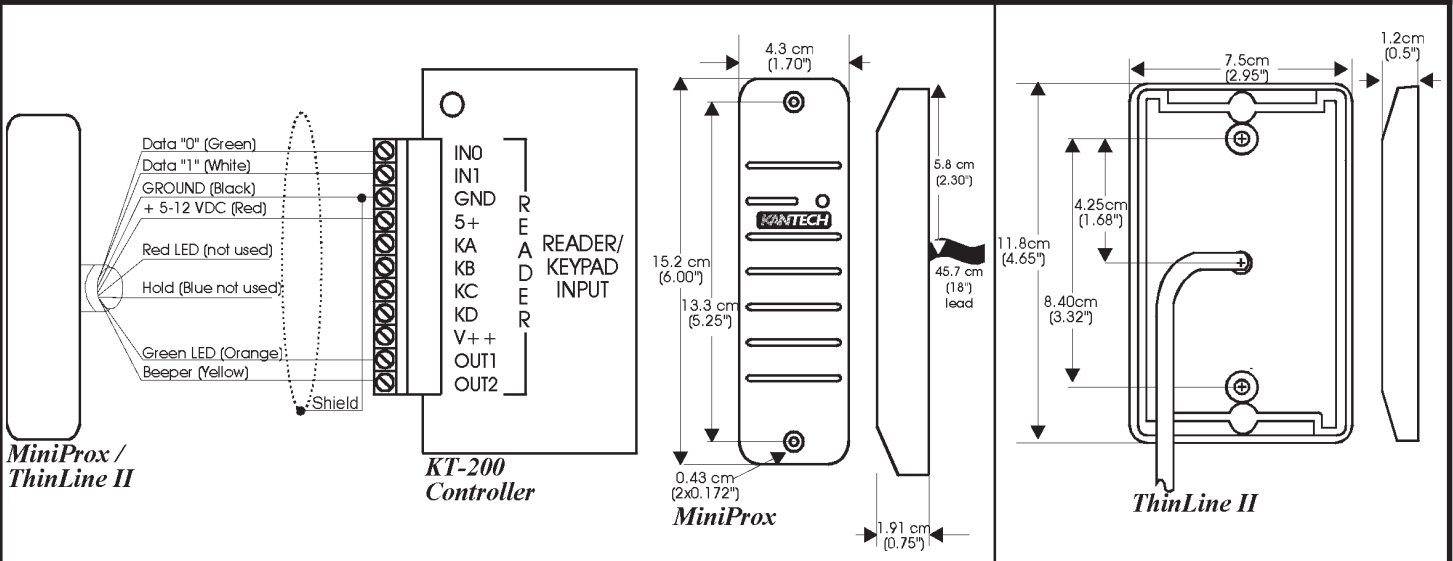
The readers recognize over 137 billion unique codes. Using KSF cards (Secure Format) provides increased security and absolute guarantee of no duplication of cards.

Technical Specifications

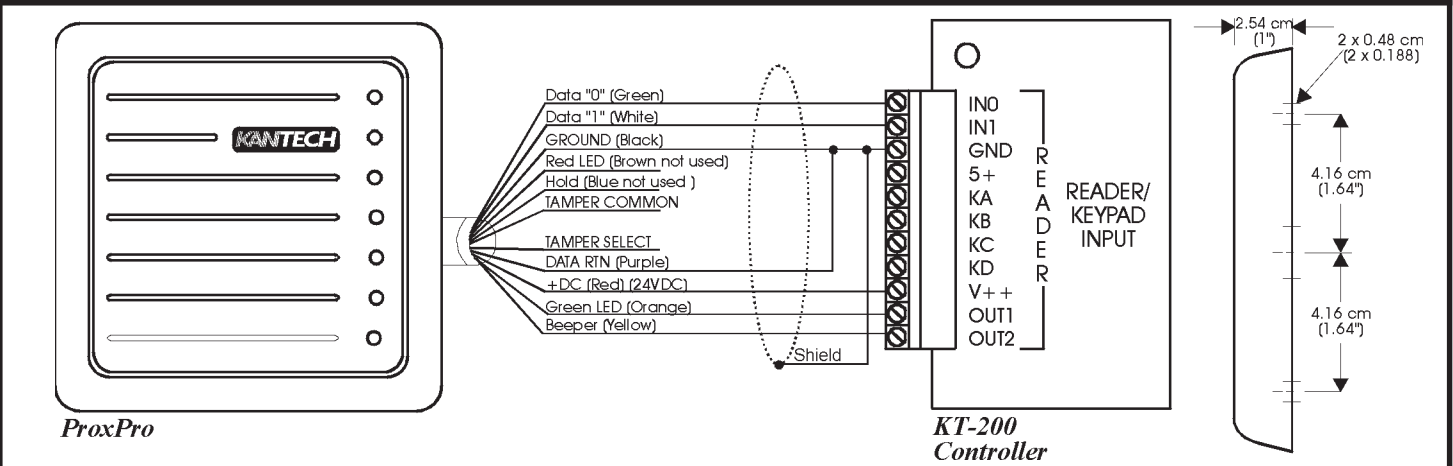
	HID-MP5365	HID-TL5395	HID-PR5355/KP	HID-MX5375
Typical read range	Up to 14 cm (5.5")	Up to 14 cm (5.5")	Up to 23cm (9")	Up to 61cm (24")
Power supply (linear power supplies are recommended)	5 to 16 VDC	5 to 16 VDC	10-28.5 VDC. Reverse voltage protection included	14-28 VDC. External power supply (24V recommended)
Average current (DC)	50mA(5VDC) 60mA(12VDC)	50mA(5VDC) 60mA(12VDC)	100mA	1A
Peak	80mA(5VDC) 160mA(12VDC)	80mA(5VDC) 160mA(12VDC)	160mA	2A
Dimensions (H.W.D.) cm	15.2 x 4.3 x 1.91	11.8 x 7.5 x 1.2	12.7 x 12.7 x 2.54	30.5 x 30.5 x 2.54
Dimensions (H.W.D.) inches	6 x 1.7 x 0.75	4.65 x 2.95 x 0.5	5 x 5 x 1	12 x 12 x 1
Enclosure material	Polycarbonate UL 94	Polycarbonate UL 94	Polycarbonate UL 94	Polycarbonate UL 94
Weight	0.11Kg (0.24 lbs)	0.1Kg (0.23 lbs)	0.34Kg (0.75 lbs)	1.4 Kg (3.19 lbs)
Color	Charcoal	White	Charcoal	Charcoal
Operating temperature	-30°C to 65°C (-22°F to 150°F)	-30°C to 65°C (-22°F to 150°F)	-30°C to 65°C (-22°F to 150°F)	-30°C to 65°C (-22°F to 150°F)
Operating humidity	0-95% non condensing	0-95% non condensing	0-95% non condensing	0-95% non condensing
Utilization	Indoor/outdoor	Indoor/outdoor	Indoor/outdoor	Indoor/outdoor
Transmit frequency	125 kHz	125 kHz	125 kHz	125 kHz
Certifications	UL 294 Listed FCC part 15, (USA) DTI(MPT 1337) (UK) CE Comply	UL 294 Listed FCC part 15, (USA) DTI(MPT 1337) (UK) CE Comply	UL 294 approved FCC part 15, (USA) DTI(MPT 1337) (UK) CE Comply	FCC part 15, (USA) DTI(MPT 1337) (UK) CE Comply
Distance from controller BELDEN #9553 (18AWG)....	150 meters (500 feet)	150 meters (500 feet)	150 meters (500 feet)	150 meters (500 feet)

Compatible cards for all readers : **Format:** HID-C1326KSF, HID-C1336KSF, HID-C1346KSF, HID-C1366, HID-C1386KSF.
Weigand 26 bits Format: HID-C1326, HID-C1336, HID-C1346, HID-C1366, HID-C1386.

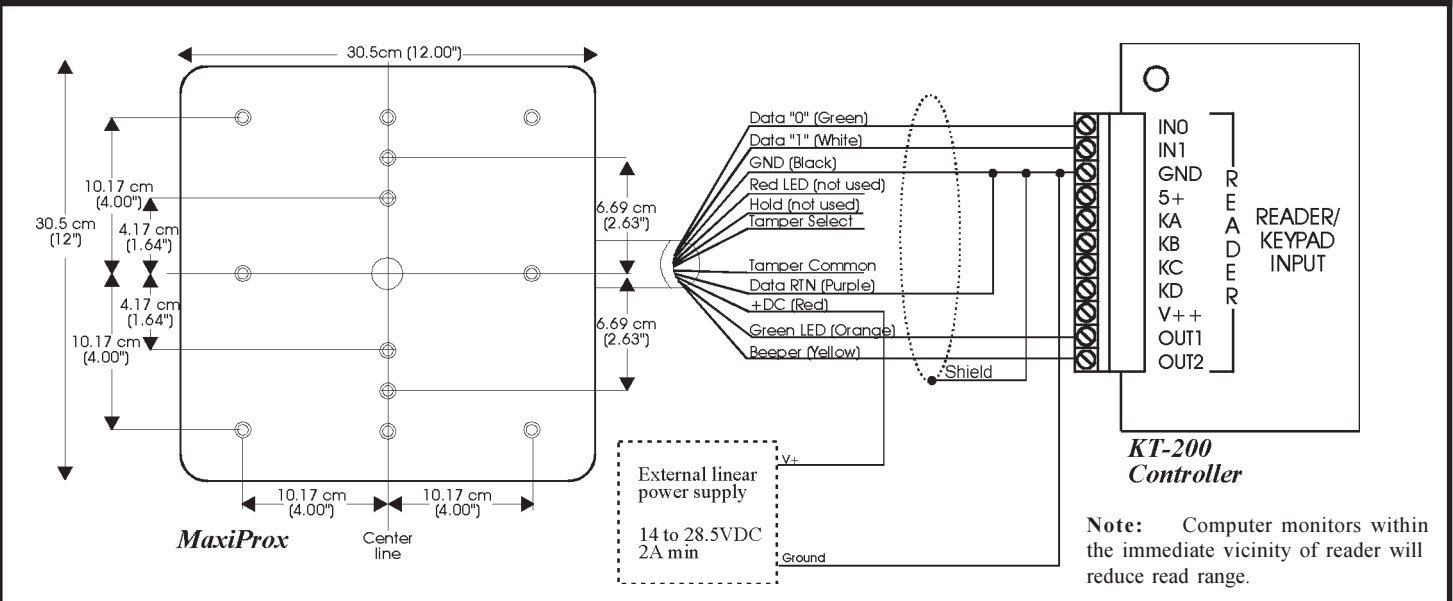
Wiring Diagram MiniProX (HID-MP5365)/ThinLine II (HID-TL5395)



Wiring Diagram ProxPro (HID-PR5355/KP)



Wiring Diagram MaxiProX (HID-MX5375)





KT-400

Powerful, Ethernet-Ready Four-Door Controller

Features That Make a Difference

- Supports four readers and expand inputs, outputs, and relays with the addition of expansion modules
- Onboard Ethernet 128-bit AES-encrypted communication with the EntraPass system ensures a high degree of network security
- Control the occupancy level in a defined location with the anti-passback feature
- 100,000 card capacity and provides up to 20,000 concurrent events in stand-alone mode
- Removable terminal blocks help expedite installation and enhance serviceability
- 256 inputs (16 on board with high security double end-of-line resistor configuration) and 256 outputs (four on board) provide scalability
- Communicates with the EntraPass Gateway only when an event has occurred, ensuring low network bandwidth consumption (Special and Corporate Editions only)
- Verify and configure IP settings with a built-in web configuration page
- Supervised door lock outputs with internal or external power supply
- LEDs provide important controller status and diagnostic information
- Additional battery supervision and monitoring help ensure controller functionality

TURNSTILES' KT-400 is an Ethernet-ready four-door controller that provides 128-bit AES-encrypted communication with the EntraPass system and is a highly secure solution for any security-conscious business. KT-400 can easily be integrated into an existing EntraPass system with other TURNSTILES controllers (KT-100 and KT-300) or can provide the foundation for a brand new security installation. With an embedded Ethernet port, IP connectivity is effortless.

Initially available with 16 onboard inputs and four onboard outputs, KT-400 is easily expandable to 256 inputs and relay outputs. The expansion modules are added using removable SPI cables with built-in connectors for quick connectivity.

KT-400 works with any EntraPass system (Special, Corporate, and Global Editions) to provide customers with a solution they can use across their entire corporation, even in the most challenging types of applications. With a card capacity of 100,000 and up to 20,000 concurrent events in stand-alone mode, KT-400 is the perfect solution whether installed at the corporate headquarters with thousands of employees or at regional locations with only a few employees. You are ensured that the same security policies and procedures are implemented across the entire corporation.

LED status indicators help you to diagnose or react to controller issues quickly. With a variety of status indicators, you can view and quickly handle system duress. These security features significantly reduce the risk of system downtime by alerting you to controller issues, power status, and network and outputs activity.



Easy Network Connectivity

You can save valuable time and money with the addition of the KT-400 Ethernet port. With embedded IP connectivity, an external IP device is no longer required to connect to the network. In addition, the 10/100Base-T Ethernet port provides faster connectivity. The onboard port is dual-sensing which means the system senses whether the connection is 10Base-T or 100Base-T and adjusts automatically.

Easy Setup with Removable Terminal Blocks

In order to expedite installation and facilitate serviceability, KT-400 features removable terminal blocks that are simple to connect and are color-coded for quick identification. This prevents an installer from wasting valuable time figuring out where to attach each wire.

Built-in Web Configuration

Use the built-in web configuration page, which is accessible through any Internet browser, to quickly verify and configure the IP settings of KT-400. For enhanced security, once KT-400 is configured and settings are accepted, the web page cannot be accessed again. If a configuration error is made, the board can be reset to factory default and the web page will be available again through the Internet browser.

Control Occupancy Levels with Anti-Passback

KT-400 supports occupancy restrictions for four local areas at the controller level with the anti-passback feature. This feature allows you to define a particular area that may have capacity limitations, such as an auditorium, conference room, or laboratory. You can configure KT-400 to limit the amount of people permitted into this area. Once the limit has been reached, no additional personnel will be allowed to enter the defined location. This prevents overcrowding or violation of capacity regulations.

Low Bandwidth Consumption

Unlike similar real-time devices, KT-400 manages network polling and communicates with the EntraPass Gateway only when an event has occurred. Communication integrity is ensured through a heartbeat signal which is sent at regular intervals to the EntraPass

system. This asynchronous communication significantly reduces the amount of bandwidth required to manage your access control system over the network. The communication link is monitored by KT-400 for enhanced security. If there is communication failure between KT-400 and EntraPass, an alarm will be triggered in the EntraPass system for immediate repair.

Supervised Lock Power for Added Flexibility

KT-400 receives 12 to 24 VDC for up to 3 amps of supervised lock power with an external power source for added flexibility.

Choose a Controller Configuration That Makes Sense for Your Application

KT-400 provides multiple controller configurations to suit your specific access control needs. These configurations provide communication with any device on the network for more connection options. You can choose any of the following options:

- IP (Ethernet)
- RS-485 (COM1) for communication between EntraPass Gateway and KT-100, KT-200 (on a separate loop), KT-300, and KT-400
- RS-232 (COM3) for direct connection to the EntraPass Gateway

More Flexibility with Expansion Modules

There are 16 onboard inputs on KT-400. Up to 240 more can be added through the addition of expansion modules for a total of 256 inputs. Each input can be individually used for a variety of applications including door contact, request to exit detectors, external alarm system zones, and more.

Additionally, there are four onboard relay outputs, and up to 256 relay or open drain outputs can be supported through the addition of expansion modules. For quick service and troubleshooting, the modules can be added using SPI cables with built-in connectors.

8641 S. Warhawk Rd. Conifer, CO 80433
Patrick.McAllister@TURNSTILES.us
(303) 670-1099 (303) 679-8949 fax



Entrapass™

ACCESS SECURITY SOFTWARE

Configurable Reader Outputs for Added Security

There are four different outputs for each of the four onboard reader interfaces for a total of 16 programmable outputs. The reader outputs provide a user with visual and/or audible feedback (from the buzzer on the reader) on ongoing access events.

End-of-Line Resistors Provide an Added Layer of Security

The 16 onboard inputs can be individually configured with or without single or double end-of-line resistors to monitor more states associated with a customer's installation, significantly increasing the level of security.

Model Numbers

KT-400

KT-400	KT-400 four-door controller, IP-ready, accessory kit (KT-400-ACC), metal cabinet {KT-400-CAB} with lock (KT-LOCK)
KT-400-EU	KT-400 four-door controller, IP-ready, accessory kit (KT-400-ACC), metal cabinet (KT-400-CABEU) with lock (KT-LOCK), European Union model
KT-400-PCB	KT-400 four-door controller (PCB only), IP-ready, accessory kit (KT-400-ACC)

Expansion Modules

KT-M0D-INP16	KT-400 Expansion Module, 16 zone input with SPI cable (KT-MOD-SPI-16)
KT-M0D-REL8	KT-400 Expansion Module, eight-relay with SPI cable (KT-MOD-SPI-16)
KT-M0D-OUT16	KT-400 Expansion Module, 16-output with SPI cable (KT-MOD-SPI-16)
KT-MOD-CAB	KT-400 Expansion Module cabinet, black, with 92 cm (36 in) SPI cable (KT-MOD-SPI-36) and lock (KT-LOCK)
KT-MOD-CABEU	KT-400 Expansion Module cabinet, black, with 92 cm (36 in) SPI cable (KT-MOD-SPI-36) and lock (KT-LOCK), European Union model
KT-MOD-SPI-16	Expansion Modules SPI cable 41 cm (16 in)
KT-MOD-SPI-36	Expansion Modules SPI cable 92cm {36 in}

KT-400 Starter and Expansion Kit

SK-CE402	KT-400 Starter Kit includes: Entrapass Corporate Edition software CD ROM, KT-400 controller (1), P225XSF reader (4), USB-485 converter (1), TR1675 transformer (1), KT-BATT-12 battery (1), and P40KEY keyfob(5)
SK-CE403	KT-400 Starter Kit includes: Entrapass Corporate Edition software CD ROM, KT-400 controller (1), P325XSF reader (4), USB-485 converter (1), TR1675 transformer (1), KT-BATT-12 battery (1) and P40KEY keyfob (5)
EK-400	KT-400 Expansion Kit includes: KT-400 controller (1),TR1675 transformer (1), and KT-BATT-12 battery (1)
EK-402	KT-400 Expansion Kit includes: KT-400 controller (1), P225XSF reader (4), TR1675 transformer (1), and KT-BATT-12 battery (1)
EK-403	KT-400 Expansion Kit includes: KT-400 controller (1), P325XSF reader (4), TR1675 transformer (1), and KT-BATT-12 battery(1)

Accessories

KT-400-ACC	KT-400 Accessory Kit includes: Four 1.0 Kohm, 32/5.6 Kohm resistors, ground wire, and screwdriver
KT-400-CAB	KT-400 black metal cabinet with lock (KT-LOCK)
KT-400-CON	KT-400 removable terminal block spare kit
KT-ACPW-LED	UL AC power LED indicator
KT-3LED-PLATE	UL-listed alarm, three-color LED indicator mounted on single gang plate
KT-TAMPER	Tamper switch for KT-NCC-CAB, KT-300CAB, and KT-4051 CAB metal cabinets
KT-LOCK	Lock for KT-NCC-CAB, KT-300CAB, and KT-4051 CAB metal cabinets, and two keys

Power Supply

TR1675	KT-400 transformer, wire-in, 120 VACI 16.5 VAC (75 VA), UL approved
KT-SW1224	KT-400 power supply. 12 VDC, 2 A
KT-BATT-12	KT-400 gel cell battery, 12 V, 7 Ah
KT-BATT-1212	KT-400 gel cell battery, 12 V, 12 Ah

8641 S. Warhawk Rd. Conifer, CO, 80433
Patrick.McAllister@TURNSTILES.us
(303) 670-1099 (303) 679-8949 fax



Entrapass™

ACCESS SECURITY SOFTWARE

Physical

Cabinet Dimensions (HxWxD)	37.59 x 30.48 x 12.57 cm (14.8 X 12.0 X 4.95 in)
PCB Dimensions	22.86 x 13.97 x 5.20 cm (9.0 X 5.5 X 2.04 in)
Cabinet Weight	
Kf-400	4.0 kg (8.82 lb)
KT-400-EU	4.8 kg (10.6 lb)

Environmental

Operating Temperature	2° to 49° C (35° to 120° F); indoor use only
Humidity Level	0 to 85% relative humidity non-condensing

Electrical

Power Input	
KT-400	16.5 VAC, 75 VA, Class 2 transformer
KT-400-EU	240 VAC IN/ 16.5 VAC, 100 VA, transformer included
Battery Backup	12 VDC/ 7 or 12 Ah battery supervised; up to 12 hours of operation
Reader Power Output	Maximum 500 mA@ 12 VDC, typical 125 mA per reader or 400 mA@ 5 VDC, typical 100 mA per reader, protected and supervised. The combined reader current cannot exceed 500 mA @ 12 V0E or 400 mA@ 5 VDC.

Operational

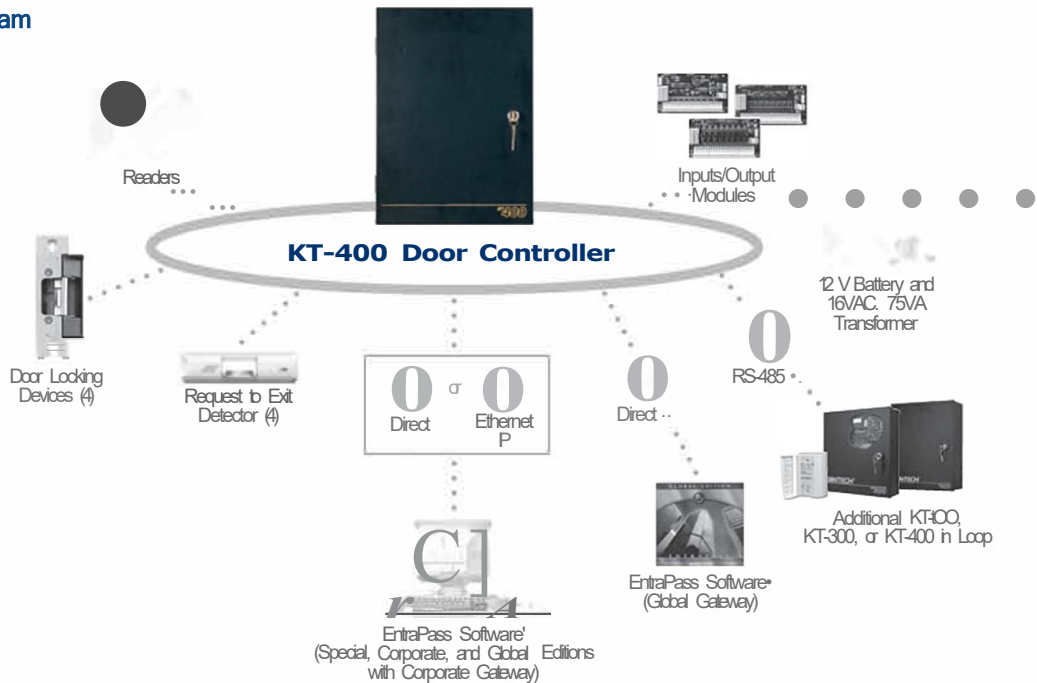
Reader Types	Wiegand, proximity, ASA clock and data, bar code, magnetic, integrated keypad, smart card
Monitored Points (Inputs)	16 monitored points, single end-of-line (EOL), double EOL
Points Maximum Wiring	AWG #22 - 600 m (2,000 ft)
Door Strike Power	12 VDC, 250 mA maximum each, supervised

Reader Outputs	16 outputs, 25 mA maximum each, open collector outputs
Auxiliary Outputs	LEDs {door 1, door 2, door 3, door 4, LED, OUT1 and OUT2} and buzzers (Buz, door 1, door 2, door 3, door 4) 25 mA each, open collector outputs
Controlled Output Relay	Four onboard Form C controlled outputs relay, 30 VDC, 3 amp max each
Communication Ports	RS-232 (1) w/11 RJ-12, RS-485 (1), Ethernet 10/100Base-T with RJ-45 (1)
Expansion Port	SPI 6-pin connector (1), bi-directional data exchange supported. Supplies 12 V0E, 500 mA maximum shared with 12 V0E auxiliary port
Auxiliary Port	Auxiliary 12 VDC (1), 500 mA maximum shared SPI expansion port
Communication Speed	Up to 115,200 baud {automatic detection} over RS-232 and RS-485; 10/100Base-T over Ethernet
Flash Memory	16 MB for application storage
RAM	64 MB for application loading and running, protected by a Lithium-Ion battery for a minimum of 75 hours
Network Autonomy	Distributed data and processing
External Lock Power	12 or 24 V0E (up to 28 VDC) supply up to 750 mA per lock for a total of 3 amp

Regulatory

EN61000-6-1, EN61000-6-2, EN55022
 FCC Class A
 UL-294, UL-1076
 RoHS
 WEEE

Basic System Diagram



(1) KT-400 is only available with Entrapass v4.01

Product offerings and specifications are subject to change without notice. Actual products may vary from photos. Not all products include all features. Availability varies by region; contact your sales representative. Certain product names mentioned herein may be trade names and/or registered trademarks of

8641 S. Warhawk Rd. Conifer, CO 80433
 Patrick.McAllister@TURNSTILES.us
 (303) 670-1099 (303) 679-8949 fax



EntraPass Global Edition Network-Ready Enterprise Level Security Management Software



Features That Make a Difference¹:

- Supports up to 128 workstations and controls hundreds of thousands of doors
- Embedded Sybase SQL database engine
- Global virtual alarm system, anti-passback, guard tours and muster reporting
- Integrate EntraPass Go mobile app – interact with EntraPass with a few taps on your mobile device
- Integrates EntraPass Web (remote user platform) to manage access control, IP video, telephone entry and/or intrusion security assets
- Supports up to 200 concurrent logins of EntraPass Web and/or EntraPass Go
- Integrates with Exacq video management systems, American Dynamics DVRs/NVRs (VideoEdge, HDVR, ADTVR and Intellex) and DSC PowerSeries and MAXSYS intrusion alarm panels
- Double and triple swipe card at reader (with KT-400 controller) to activate such features as: activate relay, arm alarm system and lock/unlock doors

Enterprise Level

EntraPass Global Edition is a powerful, network-ready enterprise level security management software that accommodates widely-dispersed applications with an unlimited number of users, controls thousands of doors and allows you to simultaneously access the system from up to 128 workstations connected to the network. Global Edition software integrates advanced security features such as EntraPass Go mobile app and EntraPass Web (remote user platform) that deliver remote and convenient access to common security tasks and reporting. The enhanced user experience makes navigation and operation easy and intuitive.

Managing Controllers For Enterprise Solutions

The KT-NCC manages communication from the EntraPass Global Edition security management software to the door controllers. It also controls features/ functions such as areas, alarm systems, global i/o, guard tours, and secondary access levels. It makes the access control system easier to manage, easier to expand, and much more reliable. The KT-NCC is in control instead of relying on a PC for controller-server communication.

Site Architecture

A site/loop is composed of controllers attached to the same communication port or connection. The software is scalable and grows with the customer's needs. EntraPass Global Edition can manage up to 32 local sites or 512 Secure IP connections per Multi-Site Gateway. Each KT-NCC supports 3 local loops (32 controllers each) and 4 remote loops (8 controllers each). The KT-NCC provides advanced cross controller communication giving customers higher flexibility and functionality. Sites/loops are comprised of any combination of KT-100, KT-300 and KT-400 door controllers.

Redundancy Server

Redundancy server protects the EntraPass database against unexpected failures and is an option available with Corporate and Global Edition software. It features real-time data transfer, creating fully functional redundancy at low cost. In the event of primary server failure, the mirror database automatically launches the redundancy server which supports all the features and functionality of the primary server. Best of all, the redundancy server is easy-to-implement and configure. Multiple redundant servers with mirror database can be used to provide local redundancy in an enterprise environment.



(1) All of the features listed on this data sheet are available with the latest build of EntraPass v6.01 and higher

Features

Global Security Features

EntraPass Global Edition is ideal for widely-dispersed applications that require a higher level of security. For example, global anti-passback helps you prevent a cardholder from passing back his or her card to a second person to gain entry into a secured area, regardless of whether those areas are in close proximity or far apart. In addition, powerful alarm partitioning lets you divide an area protected by the EntraPass system into as many as 100 partitions per Multi-Site Gateway and individualize the alarm parameters for each.

EntraPass Global Edition and KT-NCC also enable you to control clearances globally. For example, a worker with temporary access to one part of the building or campus will lose access once the authorized clearance duration has passed.

EntraPass also provides greater security and protection using muster reports. Mustering is critical for emergency situations where it is crucial to evacuate a building as quickly as possible. You can print a list of personnel in a predefined group of areas to determine who is present and if the area is secure when an alarm or event is triggered. Mustering also includes a parking management function which notifies users when a parking area is exceeding its capacity and restricts access to the area.

Remote System Management Tools

The EntraPass Web platform enhances the user experience by delivering remote and convenient real-time access to manage common security tasks and reports from any computer connected to the internet. Security managers on the go can perform a host of functions via EntraPass Web, including locking/unlocking doors, managing cards and schedules, requesting reports, viewing live video, monitoring events by floor plan and so much more. Simply download the EntraPass Web application from any Windows PC web browser and stay connected even when on the go!

EntraPass Go is a mobile app that allows you to remotely control your security system from anywhere without being tied to a workstation. EntraPass Go puts you in control of your security. It enables you to interact with EntraPass security management software using only a few taps on your mobile device. The easy-to-use mobile app offers anytime, anywhere real-time management of over 20 security tasks. Manage/create cards, lock/unlock doors, request reports and more. EntraPass Go is available for download on the App Store and Google Play.

SmartLink: Advanced System Integration and Automation

The SmartLink application enables operators to integrate EntraPass with most intelligent devices such as video multiplexers, HVAC systems, LCD panels, video matrix switchers, etc. SmartLink uses an RS-232, API or network connection between EntraPass and the external device. With the SmartLink Task Builder, EntraPass reaches new levels in task automation. A series of tasks, similar to macros, can be created and triggered on any event and component in the system. When an event occurs, the tasks are then executed by the system.

Video Integration

Real-time monitoring capability is a response to the growing importance of video in access control systems. Integration with Exacq video management systems and American Dynamics DVRs/NVRs (VideoEdge, HDVR, ADTVR and Intellex) provides real-time video monitoring as well as video playback. Video can be linked to access events (such as "door forced open") and recorded from one to sixteen cameras from compatible DVR/NVR simultaneously. All cameras can be called up directly from a floor plan simply by double-clicking on the camera or dome icon. In addition, the EntraPass InfiniView option allows for addition of 128 video servers.

EntraPass Video Vault

Video Vault offers an alternative to manually saving each video clip one-by-one. Simply pre-define groups for the video clips such as door forced open or access denied. Video Vault then saves the clips to the appropriate group based on whatever schedules are chosen. Video clips can also be organized as .bmp images in lieu of icons. It can connect up to 128 Exacq and/or American Dynamics DVRs/NVRs (VideoEdge, HDVR, ADTVR and Intellex) via integration with EntraPass software and can archive the imported video to as many as 24 digital storage devices.

Take a closer look

Alarm Panel Integration



By integrating all security assets such as intrusion detection, access control, video and telephone entry into one common platform, users can interface with just one system, for greater simplicity and optimum control. Kantech offers integration kits to connect

a DSC intrusion alarm panel to an access control system to create a single unified solution. Data integration with DSC PowerSeries or MAXSYS intrusion alarm panels allows the access control system to receive intrusion events, view zone status and to manage partitions/user codes.

Telephone Entry Integration

Apartment, condominium and office buildings are just a few of the applications where security and communications are required for controlling resident and visitor traffic. The Telephone Entry System (KTES) delivers a fully integrated telephone entry and access control solution. The KTES provides visitor/resident entry, tracking and reporting. It uses a touch-tone phone style keypad that offers both familiarity and ease of use. Two-way audio is built-in. Video verification can be integrated to enhance the solution.

Minimum System Requirements

Processor (without video integration)	Dual Core
Processor (with video integration)	Quad Core
RAM	4GB (8GB with video integration)
Free Hard Disk Space for Software	50GB
Color Depth	24-bit (16 million colors), required for video integration
Screen Resolution	1024 x 768
Graphic Adapter Card	PCI Express graphics card with 512MB (1GB with video integration) memory and DirectX 9.0 support
Network Interface Card	10/100 Base-T network adaptor (Gigabit or Greater with Video Integration)

Operating System Compatibility

Windows XP Pro in 32-bit version, Server 2003/2008 Standard/Enterprise, Vista Pro and Windows 7 Pro (all in 32 and 64-bit versions), Windows 8 (limited to access control function only). All operating systems should have their latest Service Packs and updates. **For integration, validate specifications of products used.**

Virtual Environment SupportedVMware Workstation v7 & higher

System Capacities

Cards per Gateway (Online)	Unlimited
Card Families or Site Codes	Unlimited
Global Gateways	128
Multi-Site Gateways	40
Elevator Floors per Cab	64 (KT-300 and KT-400)
Card User Access Levels	250 per site/gateway
Access Level Combination	Unlimited
Operator Workstations	128 workstations
Concurrent EntraPass Web Logins	200
System Operator Passwords	Unlimited
Operator Security Levels	Unlimited, pre-defined (3)
Concurrent System Languages	2

Per Global Gateway

Loops per Global Gateway	32
Door Controllers	1,024
Card Readers/Keypads	
KT-300	2,048
KT-400	4,096
Monitored Points (Inputs)	
KT-300	Up to 16,384
KT-400	Up to 262,144
Auxiliary Outputs for Reader LEDs and Door Alarms	
KT-300	Up to 4,096
KT-400	Up to 8,192
Schedules	100/gateway
Time Intervals Per Schedule	20
Holidays	366/gateway
Access Level Per Card Holder	13

Per Multi-Site Gateway

Loops per Multi-Site Gateway	544
Door Controllers	17,408
Card Readers/Keypads	
KT-300	34,816
KT-400	69,632
Monitored Points (Inputs)	
KT-300	278,528
KT-400	4,456,448
Auxiliary Outputs for Reader LEDs and Door Alarms	
KT-300	Up to 69,632
KT-400	Up to 278,528
Schedules	100/site
Time Intervals Per Schedule	KT-300 (4), KT-400 (20)
Holidays	366/site

Integration Capabilities

IntrusionDSC and MAXSYS Alarm Panels (PC1616, PC1832, PC1864, PC4020)

Video

Exacq video management systems and American Dynamics DVRs/NVRs (VideoEdge, HDVR, ADTVR and Intellex). Intellex Ultra, DVMS and IP all require software v3.1 or higher, Intellex LT requires software v2.6 or higher. Panasonic video recorders (requiring option E-COR-DVR-1): WJ-HD309A/316A/616/716, WJ-ND200/300/400.

Model Numbers

Software

Each EntraPass Global Edition software package includes: four additional Workstation licenses, one Server/Workstation license, one Global Gateway (Windows NCC) license and one WebStation license.

E-GLO-EN-V6	EntraPass Global Edition software and English user manual
E-GLO-FR-V6	EntraPass Global Edition software and French user manual
E-GLO-V6-LIC	EntraPass Global Edition software license
E-GLO-V6	EntraPass Global Edition software
E-GLO-UPG-V6-EN	EntraPass Global Edition software upgrade from v3.xx to v6.xx and English user manual
E-GLO-UPG-V6-FR	EntraPass Global Edition software upgrade from v3.xx to v6.xx and French user manual
E-GLO-UPG-V6-LIC	EntraPass Global Edition software upgrade license

EntraPASS.com

Additional Workstation and Gateway Licenses

E-GLO-WS1 License for 1 Workstation (v3.xx and higher)
E-GLO-WS8 License for 8 Workstations (v3.xx and higher)
E-GLO-COM-WIN License for 16 Global Gateways - Windows NCC -
(v3.xx and higher)
E-GLO-CORCOM License for 40 Multi-Site Gateways
(v3.xx and higher)

E-GLO-INFVID License for EntraPass InfiniView - 128 additional
video servers (v5.01 and higher)
E-GLO-DVR-1 License for single 3rd party DVR (v5.02 and higher)
E-GLO-DVR-UNL License for unlimited 3rd party DVR (v5.02
and higher)

Options

E-GLO-RDN License for 1 Redundancy Server (v3.xx and higher)
E-GLO-SQL License for 1 Card Gateway - MS SQL Database
Interface (v3.xx and higher)
E-GLO-VVM License for 1 EntraPass Video Vault
(v3.xx and higher)
E-GLO-WEB-1 License for 1 concurrent WebStation login
(v4.xx and higher)
E-GLO-WEB-3 License for 3 concurrent WebStation logins
(v4.xx and higher)
E-GLO-WEB-10 License for 10 concurrent WebStation logins
(v6.01 and higher)
E-GLO-WEB-25 License for 25 concurrent WebStation logins
(v6.01 and higher)
E-GLO-WEB-50 License for 50 concurrent WebStation logins
(v6.01 and higher)

User Manual

E-GLO-MAN-EN EntraPass Global Edition English user manual

Key Benefits of Upgrade - v4.02 to v6.01

- Version 6.01 provides greater video integration, including support for Panasonic video surveillance technology.
- Version 6.01 allows expanded integration with all American Dynamics for video integration (please contact your sales representative for more details).
- Version 6.01 ensures that users always have the latest version of EntraPASS Software using the new auto-updater feature.
- Version 6.01 allows full integration with expandable hybrid alarm panels from Bentel and other manufacturers.
- Version 6.01 supports the EntraPASS Go Mobile Security app that can be used with both smartphones and tablet computers to control more than 20 security tasks in real time.
- Version 6.01 supports EntraPASS Video Vault, which offers an alternative to manually saving each video clip one-by-one for video surveillance applications



Our most powerful, versatile heating system, engineered for commercial and industrial applications.

The A SERIES electric infrared heaters represent the evolution of engineered short wave heating technology. A Series Heaters produce short wave length infrared that convert 92% of consumed energy to instant, controllable, directional heat. This heating technology is not affected by wind or draft as it warms people, objects and things and not the air.

The modular design of the A Series allows specifying engineers to adjust and direct specified heating loads based on area requirements. The A Series modern, sleek design allows architects to integrate heating technology with clean un-intrusive lines. A Series Heaters are engineered to meet IP24 standard for water spray so they can be installed in both wet (outdoor) or dry conditions (indoor or outdoor).



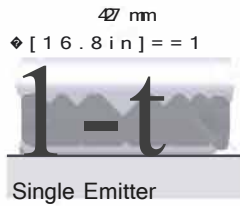
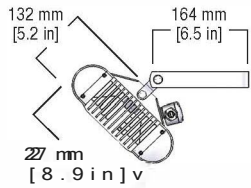
**WEATHERPROOF
TECHNOLOGY**



- Commercial/industrial grade heater
- Powder coated aircraft aluminum body and mounting brackets, stainless steel mounting hardware
- Indoor OR outdoor rated for wet or dry conditions
- Modular design for engineered heat load requirement
- Engineered for both wall and overhead mounting
- 92% energy conversion with no Co² or NOX emission
- cCSAus listed and certified to ANSI/UL 1278, UL 2021, ANSI/UL 875 and ANSI/UL 834

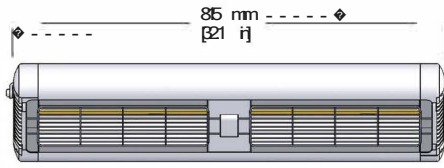
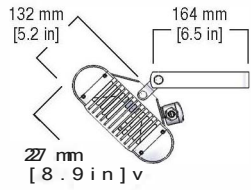
Ideal for warehouses, shipping areas, security gate houses, outdoor waiting areas





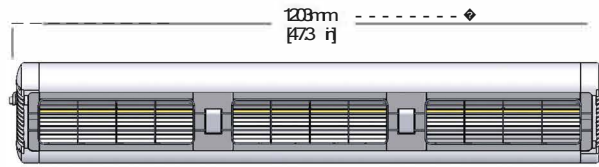
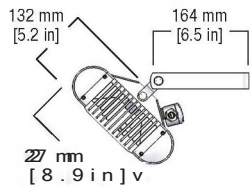
SPECIFICATIONS

Weight 7.5 lbs [3.4 kg]



H2- Double Emitter

Weight 12.3 lbs [5.6 kg]

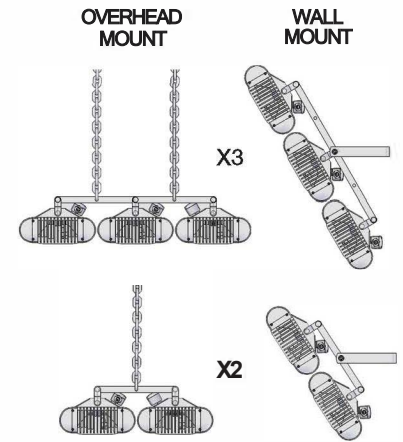


H3- Triple Emitter

Weight 17.6 lbs [8.0 kg]

All Commercial heaters should be installed by certified electrician to local and state electrical codes

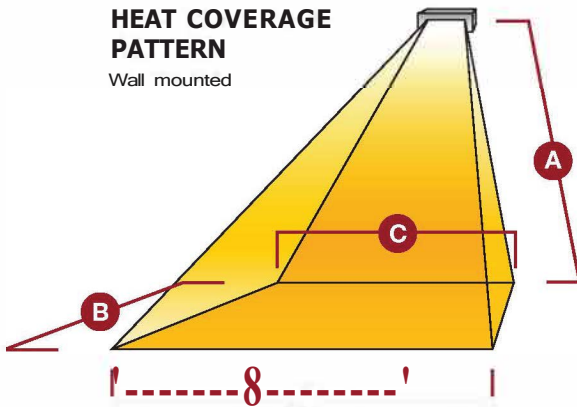
MOUNTING CONFIGURATIONS



Variable controllers, timers and occupancy sensors allow you to control precise heat requirements for conditions.

HEAT COVERAGE PATTERN

Wall mounted



Heat Coverage Examples

Model	A	B	C	D	Heat Zone*	Heat Density*
A15120S	8'2"	10'	10'	12'	110 sq. ft.	13 Watt/sq. ft.
A15240S	8'2"	10'	10'	12'	110 sq. ft.	13 Watt/sq. ft.
A20240S	8'2"	10'	10'	12'	110 sq. ft.	18 Watt/sq. ft.
AH2-30240S	10'	11'	13'	16'	160 sq. ft.	19 Watt/sq. ft.
AH2-40240S	10'	11'	13'	16'	160 sq. ft.	25 Watt/sq. ft.
AH3-45240S	12'	14'	15'	18'	230 sq. ft.	20 Watt/sq. ft.
AH3-60240S	12'	14'	15'	18'	230 sq. ft.	26 Watt/sq. ft.
*AH2-40240S X2	12'	14'	15'	17'	200 sq. ft.	34 Watt/sq. ft.
AH2-45240S X2	15'	20'	15'	22'	370 sq. ft.	24 Watt/sq. ft.
AH2-60240S X2	15'	20'	15'	22'	370 sq. ft.	32 Watt/sq. ft.

* Heat Zone and actual heat density will vary based on mounting height and angle of heater (Overhead mounted heat zones will be different than this guide).

A Series available in Silver grey. Black or white also available as special order

Model (S-silver/grey color)	Watt	Volt	Ampere	L x D x H	Weight	Emitter(s)	Replacement Emitter
A15120S	1.5kW	120V	12.5A	16 x 6 x 9	7.5 lbs	1 emitter	AW15120
A15240S	1.5kW	240V	6.25A	16 x 6 x 9	7.5 lbs	1 emitter	AW15240
A20240S	2.0kW	240V	8.33A	16 x 6 x 9	7.5lbs	1 emitter	AW20240
AH2-30240S	3.0kW	240V	12.5A	32 X 6 X 9	12.3 lbs	2 emitter	AW15240
AH2-40240S	4.0kW	240V	16.7A	32 x 6 x 9	12.31bs	2emitter	AW20240
AH3-45240S	4.5kW	240V	18.75A	48 x 6 x 9	17.6 lbs	3 emitter	AW15240
AH3-60240S	6.0kW	240V	25A	48 x 6 x 9	17.6 lbs	3 emitter	AW20240

HIGH OUTPUT MODULAR OPTIONS - sample configurations

Model	Watt	Volt	L X D X H	Weight	Emitter(s)	Replacement Emitter
** AH2-40240S X2	8.0kW	240V*	32 X 6 X 18	24.6 lbs	4 emitter	AW20240
AH2-45240S X2	9.0kW	240V*	48 X 6 X 18	35.2 lbs	6 emitter	AW15240
AH2-60240S X2	12.0kW	240V*	48 X 6 X 18	35.2 lbs	6 emitter	AW20240

* available in 480 V